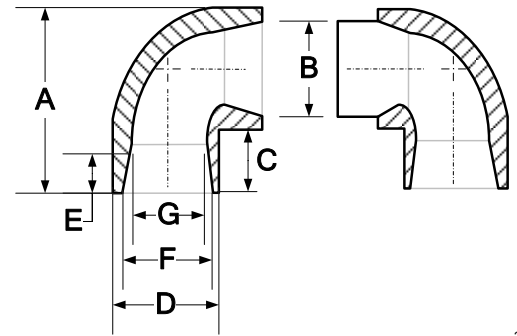


SOCKET FUSION FITTINGS

U-BEND

FOR REFERENCE ONLY

(SOCKET) IPS



2

Nominal Pipe Size	A Length ¹	B Length ¹	C Length ¹	D Length ¹	E Socket Length	F Socket Entrance	G Socket Bottom
3/4" IPS	2.100"	1.060"	0.700"	1.400"	0.625"	1.020" +/-0.008	1.012" +.008/-0.012
mm	53.34	26.92	17.78	35.56	15.88	25.91	25.70
1" IPS	2.330"	1.310"	0.615"	1.730"	0.685"	1.275" +/-0.008	1.267" +.008/-0.012
mm	59.18	33.27	15.62	43.94	17.40	32.38	32.18
1 1/4" IPS	3.100"	1.650"	0.850"	2.250"	0.875"	1.620" +/-0.008	1.612" +.008/-0.016
mm	78.74	41.91	21.59	57.15	22.23	41.15	40.94

¹ All values are nominal dimensions

² Drawing may not be exact representation of product

Note Please contact a Rahn Customer Sales Rep for availability



Rahn Plastics Incorporated

54 Ferris Dr, North Bay

Ontario, Canada, P1A 4M3

www.rahnplastics.com

(Local)

(Toll Free)

(Fax)

1-705-495-6777

1-888-433-0111

1-866-495-6820