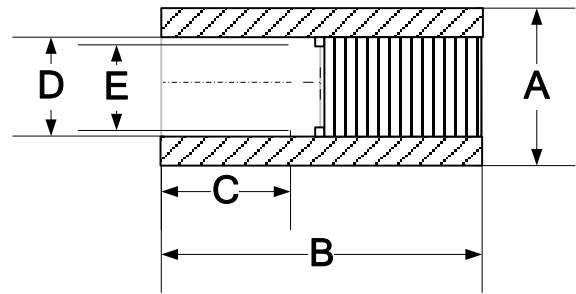


# SOCKET FUSION FITTINGS

# FEMALE ADAPTER

FOR REFERENCE ONLY

(SOCKET) IPS



2

Nominal Pipe Size	A Length <sup>1</sup>	B Length <sup>1</sup>	C Socket Length	D Socket Entrance	E Socket Bottom
<b>1/2" IPS</b>	1.200"	1.950"	0.575"	.585" +.010/-0.007	.575" +.010/-0.007
mm	30.48	49.53	14.61	14.86	14.61
<b>3/4" IPS</b>	1.450"	1.980"	0.625"	1.020" +/-0.008	1.012" +.008/-0.012
mm	36.83	50.29	15.88	25.91	25.70
<b>1" IPS</b>	1.750"	1.865"	0.685"	1.275" +/-0.008	1.267" +.008/-0.012
mm	44.45	47.37	17.40	32.38	32.18
<b>1 1/4" IPS</b>	2.230"	1.825"	0.875"	1.620" +/-0.008	1.612" +.008/-0.016
mm	56.64	46.36	22.23	41.15	40.94
<b>1 1/4" x 1" IPS</b>	1.745"	2.785"	0.875"	1.620" +/-0.008	1.612" +.008/-0.016
mm	44.32	70.74	22.23	41.15	40.94
<b>1 1/2" IPS</b>	2.540"	2.100"	0.875"	1.860" +/-0.010	1.849" +.010/-0.020
mm	64.52	53.34	22.23	47.24	46.96
<b>2" IPS</b>	3.030"	2.200"	0.875"	2.335" +/-0.010	2.324" +.010/-0.020
mm	76.96	55.88	22.23	59.31	59.03
<b>3" IPS</b>	4.275"	2.700"	1.000"	3.455" +/-0.015	3.439" +.015/-0.025
mm	108.59	68.58	25.40	87.76	87.35
<b>4" IPS</b>	5.135"	3.250"	1.125"	4.450" +/-0.015	4.434" +.015/-0.035
mm	130.43	82.55	28.58	113.03	112.62

<sup>1</sup> All values are nominal dimensions

<sup>2</sup> Drawing may not be exact representation of product

Note Please contact a Rahn Customer Sales Rep for availability



Rahn Plastics Incorporated  
 54 Ferris Dr, North Bay  
 Ontario, Canada, P1A 4M3  
[www.rahnplastics.com](http://www.rahnplastics.com)

(Local) 1-705-495-6777  
 (Toll Free) 1-888-433-0111  
 (Fax) 1-866-495-6820