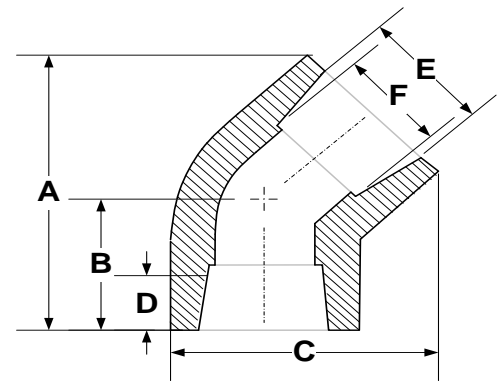


SOCKET FUSION FITTINGS

45° ELBOW

FOR REFERENCE ONLY

(SOCKET) IPS & CTS



2

Nominal Pipe Size	A Length ¹	B Length ¹	C Length ¹	D Socket Length	E Socket Entrance	F Socket Bottom
1/2" IPS	2.250"	1.150"	1.800"	0.575"	.810" +.005/-.010	.804" +.005/-.026
mm	57.15	29.21	45.72	14.61	20.57	20.42
3/4" CTS	2.350"	1.250"	2.000"	0.625"	.835" +/--.010	.825" +/--.010
mm	59.69	31.75	50.80	15.88	21.21	20.96
3/4" IPS	2.350"	1.250"	2.000"	0.625"	1.020" +/--.008	1.012" +.008/-.012
mm	59.69	31.75	50.80	15.88	25.91	25.70
1" CTS	2.500"	1.300"	2.250"	0.625"	1.075" +/--.008	1.070" +.008/-.012
mm	63.50	33.02	57.15	15.88	27.30	27.18
1" IPS	2.500"	1.300"	2.250"	0.685"	1.275" +/--.008	1.267" +.008/-.012
mm	63.50	33.02	57.15	17.40	32.38	32.18
1 1/4" IPS	2.950"	1.600"	2.750"	0.875"	1.620" +/--.008	1.612" +.008/-.016
mm	74.93	40.64	69.85	22.23	41.15	40.94
1 1/2" IPS	3.250"	1.650"	3.000"	0.875"	1.860" +/--.010	1.849" +.010/-.020
mm	82.55	41.91	76.20	22.23	47.24	46.96
2" IPS	4.100"	2.100"	3.700"	0.875"	2.335" +/--.010	2.324" +.010/-.020
mm	104.14	53.34	93.98	22.23	59.31	59.03
3" IPS	5.750"	3.000"	5.400"	1.000"	3.455" +/--.015	3.439" +.015/-.025
mm	146.05	76.20	137.16	25.40	87.76	87.35
4" IPS	7.250"	3.500"	7.000"	1.125"	4.450" +/--.015	4.434" +.015/-.035
mm	184.15	88.90	177.80	28.58	113.03	112.62

¹ All values are nominal dimensions

² Drawing may not be exact representation of product

^{Note} Please contact a Rahn Customer Sales Rep for availability

Rahn Plastics Incorporated
 54 Ferris Dr, North Bay (Local) 1-705-495-6777
 Ontario, Canada, P1A 4M3 (Toll Free) 1-888-433-0111
www.rahnplastics.com (Fax) 1-866-495-6820

